

34 Millmead, Sutton Road, Shrewsbury, SY2 6DR  
£550 Per Month





34 Millmead, Sutton Road, Shrewsbury, SY2 6DR

**£550 Per Month**

VIRTUAL TOUR AVAILABLE - Recently renovated second floor studio flat in a converted Edwardian School building situated in a quiet residential area a short distance from Shrewsbury town centre. Allocated Parking and communal gardens.

Available: 17/02/26

## Description

Comprising: Stairs to second floor, private entrance hall, modern shower room, modern kitchen including oven, hob & fridge, bed/sitting room. Gas central heating, double glazing. Communal laundry room. One parking space. Extensive communal gardens. EPC D

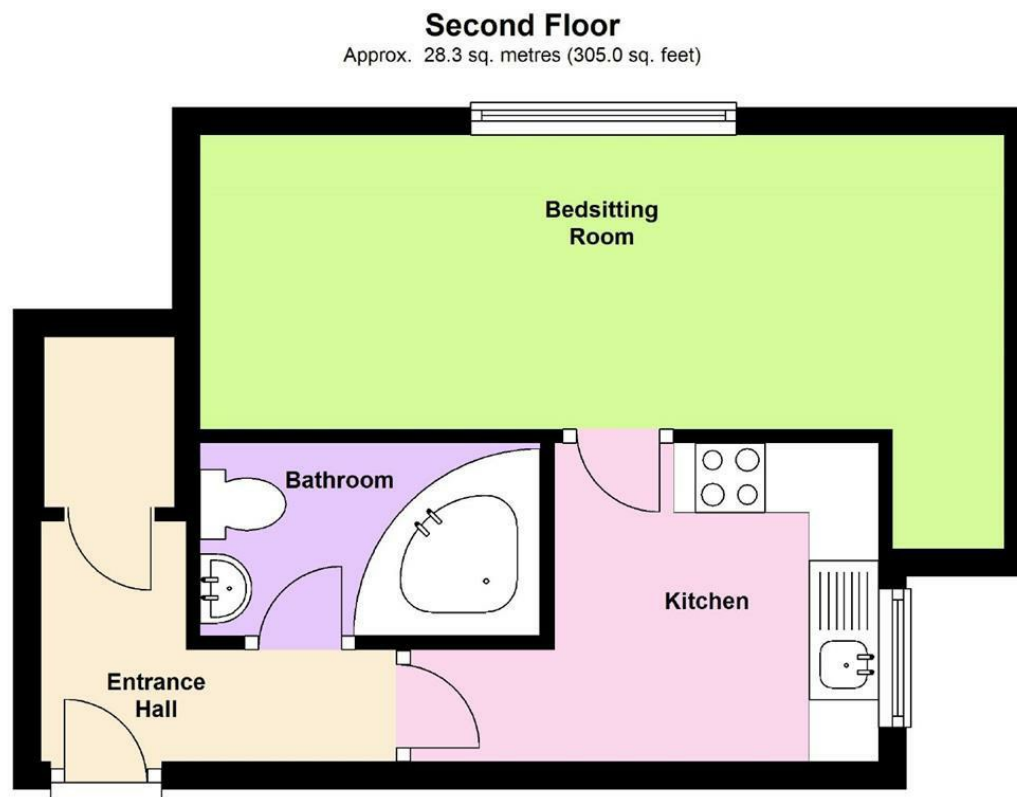
Unfurnished

Council Tax Band: A

Available: 17th February 2026

EPC: D

## Floor Plans



Total area: approx. 28.3 sq. metres (305.0 sq. feet)

We accept no responsibility for any mistake or inaccuracy contained within the floorplan. The floorplan is provided as a guide only and should be taken as an illustration only. The measurements, contents and positioning are approximations only and provided as a guidance tool and not an exact replication of the property.

Plan produced using PlanUp.

These particulars, whilst believed to be accurate are set out as a general outline only for guidance and do not constitute any part of an offer or contract. Intending purchasers should not rely on them as statements of representation of fact, but must satisfy themselves by inspection or otherwise as to their accuracy. No person in this firm's employment has the authority to make or give any representation or warranty in respect of the property.